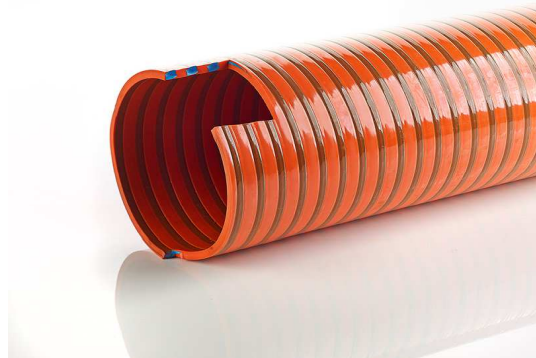
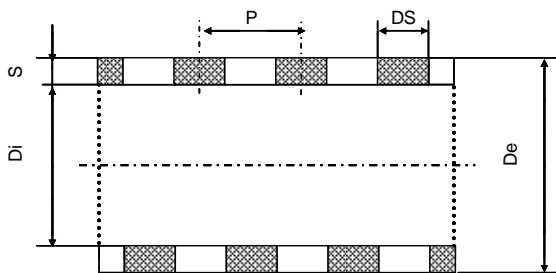


**NEW GENERATION**



Appearance in reality may change

I. Diam ±4% mm	E. Diam ±4% mm	Weight ±4% g/m	Min. Bending Radius n x Da	Max Working Pressure bar	Vacuum m water	Coil length max m
30	38	530	3x	8	9	30/50
32	40,5	550	3x	8	9	30/50
35	43,5	600	3x	8	9	30/50
38	46,4	650	3x	7,5	9	30/50
40	48,5	680	3x	7,5	9	30/50
45	52,5	750	3x	7	9	30/50
50	58,4	850	3x	6,5	9	30/50
51	59,4	850	3x	6,5	9	30/50
60	68,8	1000	3x	6	9	30/50
63	72	1150	3x	6	9	30/50
65	73,8	1180	3x	6	9	30/50
70	80,2	1300	3x	5,5	9	30/50
75	85,2	1500	3,5x	5,5	9	30/50
76	86,2	1500	3,5x	5,5	9	30/50
80	90,4	1700	3,5x	5	9	30/50
90	106	1900	3,5	5	9	30/50
102	111,7	2200	3,5x	4,5	9	30/50
110	121	2400	3,5x	4	9	30/50
120	131,2	2800	3,5x	4	9	30/50
127	140,1	3200	4x	3,5	9	30
152	166,2	4300	4x	3	9	20
160	173,6	4600	4x	3	9	20
203	224,4	8000	4x	2,5	9	10

**Description**

Patented hose with special design: although extremely light and flexible, the mechanical characteristics of this hose are the same as heavy duty hoses on the market.

**Application**

Suction and delivery hose for many industries and civil works, for liquids, water, delivery of pellets, etc. Resistant to many chemicals, sea water, as well as to bending. Specially suitable for applications in cool conditions, also when maximum flexibility is required.

**Structure**

Hose in flexible PVC with a shock resistant rigid PVC

**Colour**

Standard colour: orange with a grey spiral, or grey with a grey spiral. Other colours upon request

**Working Temperature**

-25 + 60° C

**Please contact us for additional versions**

Technical data @ 22 °C

Manufacturer reserves the right to change technical characteristics without prior notice and cannot be held responsible for improper use of the product