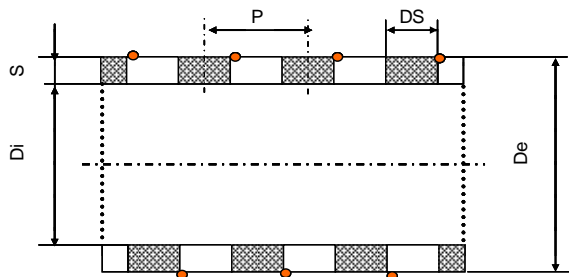


NEW GENERATION AS



Appearance in reality may change

I. Diam ±4% mm	E. Diam ±4% mm	Weight ±4% g/m	Min. Bending Radius n x Da	Max Working Pressure bar	Vacuum m water	Coil length max m
32	40,5	600	3x	8	9	30/50
38	46,4	700	3x	7,5	9	30/50
45	52,5	875	3x	7	9	30/50
50	58,4	910	3x	6,5	9	30/50
51	59,4	910	3x	6,5	9	30/50
60	68,8	1065	3x	6	9	30/50
63	72	1215	3x	6	9	30/50
65	73,8	1245	3x	6	9	30/50
70	80,2	1370	3x	5,5	9	30/50
75	85,2	1570	3,5x	5,5	9	30/50
76	86,2	1570	3,5x	5,5	9	30/50
80	90,4	1775	3,5x	5	9	30/50
90	106	1975	3,5	5	9	30/50
102	117	2275	3,5x	4,5	9	30/50
110	121	2480	3,5x	4	9	30/50
120	131,2	2880	3,5x	4	9	30/50
127	140,1	3280	4x	3,5	9	30
152	166,2	4390	4x	3	9	20
160	173,6	4695	4x	3	9	20
203	224,4	8100	4x	2,5	9	10

Description

Patented hose with special design: although extremely light and flexible, the mechanical characteristics of this hose are the same as the heavy duty hoses on the market.

Application

For medium applications. Suction and pressure hose in many industry sectors like civil works, for liquids flow delivery of pellets, etc. Resistant to many chemicals, brine and sea water, as well as to bending. Specially suitable for applications in cool conditions, also when maximum flexibility is required. For any application where static electricity can be generated

Structure

Hose in soft PVC with a hard PVC spiral shock resistant. 9 strand copper static wire

Colour

Standard colour: orange with a grey spiral, or grey with a grey spiral.

Working Temperature:
-25 + 60° C

Please contact us for additional versions

Technical data @ 22 °C

Manufacturer reserves the right to change technical characteristics without prior notice and cannot be held responsible for improper use of the product