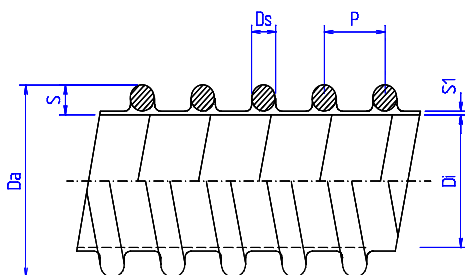


NOVIAIR L



Appearance in reality may change

I. Diam ±4%	E. Diam ±4%	Weight ±4%	Min. Bending Radius	Max Working Pressure	Vacuum	Coil length max
mm	mm	g/m	n x Da	bar	m water	m
16	21	93	1	1,5	4	30
19	24	102	1	1,5	4	30
20	25	112	1	1,5	4	30
25	30,6	158	1	1,5	4	30
30	35,6	186	1	1,5	3,5	30
32	38	195	1	1	3,5	30
35	42	223	1	1	3,5	30
38	45	246	1	1	3,5	30
40	48	260	1	1	3,5	30
45	52	335	1	1	3	30
50	58	419	1	1	3	30
55	63	456	1	1	3	30
60	69	502	1	1	3	30
63	72	525	1	1	3	30
65	74	549	1	1	3	30
70	79	595	1	1	3	30
76	86	642	1	1	3	30
80	90	725	1	1	3	30
90	101	772	1	1	3	30
102	116,6	930	1	0,5	2,5	30
110	122	1023	1	0,5	2,5	30
120	132	1116	1	0,5	2,5	30
127	139	1181	1	0,5	2,5	30
130	142	1209	1	0,5	2,5	20
140	152	1395	1	0,5	2,5	20
152	164,4	1590	1	0,5	2,5	20
160	173	1767	1	0,25	2	20
180	194	2046	1	0,25	2	10
203	217	2418	1	0,25	2	10
250	268	3300	1	0,10	1,5	10
254	272	3330	1	0,10	1,5	10
300	322	3650	1	0,10	1,5	10

Description

Very flexible and light hose.

Application

Suction hose for: Ventilation and extraction of smoke, dust and textile fibres

Structure

Flexible PVC wall with rigid PVC spiral. The particular and unique design of the spiral confers to the hose an excellent radial resistance against internal and external pressure. Smooth inner

Colour

Standard colour: Dark grey with grey rigid spiral Other colours upon request

Working Temperature

-15° + 65°C

Please contact us for additional versions

Technical data @ 22 °C

Manufacturer reserves the right to change technical characteristics without prior notice and cannot be held responsible for improper use of the product