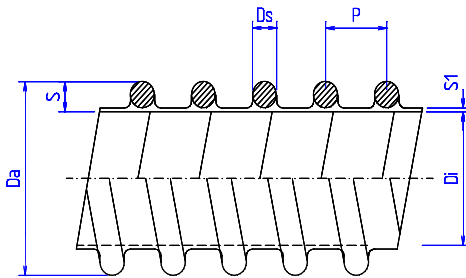


NOVIVENT PU /M



Appearance in reality may change

I. Diam ±4%	E. Diam ±4%	Weight ±4%	Min. Bending Radius	Max Working Pressure	Vacuum	Coil length max
mm	mm	g/m	n x Da	bar	m water	m
20	25	100	1 x	0,35	5	20
25	30,4	150	1 x	0,35	5	20
30	36	190	1 x	0,35	5	20
32	38	200	1 x	0,35	5	20
35	41,4	215	1 x	0,35	4	20
38	44,6	230	1 x	0,4	4	20
40	46,6	250	1 x	0,4	4	20
45	51,8	280	1 x	0,45	4	20
50	57	310	1 x	0,5	4	20
51	58	315	1 x	0,5	4	20
55	62,2	350	1 x	0,5	4	20
60	67,4	390	1 x	0,5	4	20
63	70,6	430	1 x	0,5	4	20
70	78,4	500	1 x	0,55	4	20
75	83,8	550	1 x	0,55	4	20
76	84,8	555	1 x	0,55	4	20
80	89	610	1 x	0,55	4	20
89	98,4	710	1 x	0,55	4	20
90	99,4	715	1 x	0,55	4	20
100	110,4	820	1 x	0,6	4	20
102	112,4	835	1 x	0,6	4	20
110	120,4	890	1 x	0,6	3	20
120	131	950	1 x	0,6	3	20
125	136,6	1000	1 x	0,65	3	20
127	138,6	1015	1 x	0,65	3	20
130	142	1100	1 x	0,65	3	20
140	152,4	1230	1 x	0,65	3	20
150	162,8	1365	1 x	0,7	3	20
152	164,8	1380	1 x	0,7	3	20
160	173	1550	1 x	0,7	3	10
180	193,4	1950	1 x	0,7	3	10
200	213,6	2100	1 x	0,8	3	10
203	217	2150	1 x	0,8	3	10
254		3000	1x	0,8	3	10
305		3600	1x	0,8	3	10

Description

Exceptional hose, extremely flexible, with the wall bending towards the outside for optimum flow and extended life. Good resistance against wear, oil, fat, ozone and many chemicals. Ether PU for microbe resistance. Ester PU for abrasion resistance. FQ and FDA approved versions available.

Application

Specially suitable for abrasive dusts, cement, cereal grains, sugar and other granules.

Structure

PU hose with a hard PVC spiral, crush resistant.

Colours

Standard colour: Transparent with grey spiral Heavy types: transparent with blue spiral. Other colours upon request

Working pressures

up to ID 65: 1bar. Upwards: 0,5 bar

Working Temperature

-25° +85° C

Please contact us for additional versions

Technical data @ 22 °C

Manufacturer reserves the right to change technical characteristics without prior notice and cannot be held responsible for improper use of the product